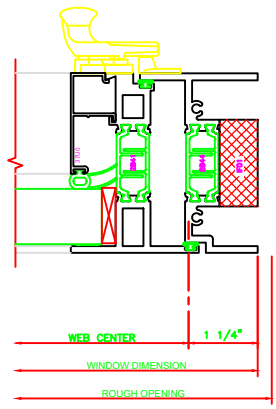
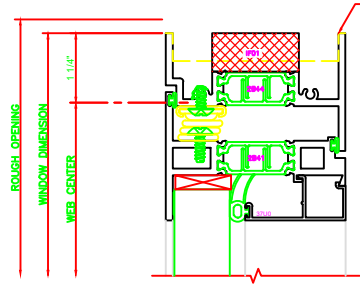


440	JAMB
	325 CASEMENT OUT
	4-BAR ARMS



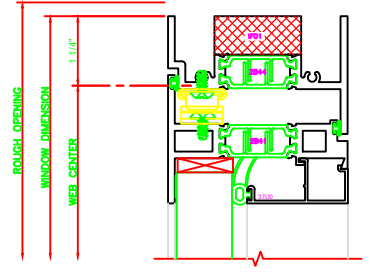
441	JAMB
	325 CASEMENT OUT
	CAM LOCK

140	HEAD
	325 CASEMENT OUT
	4-BAR ARM

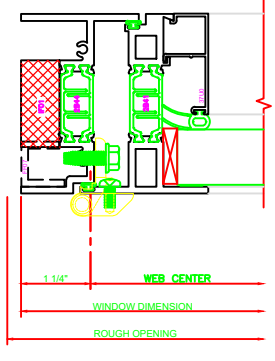


141	HEAD
	325 CASEMENT OUT
	BUTT HINGES

Note: Jamb tooling if applicable

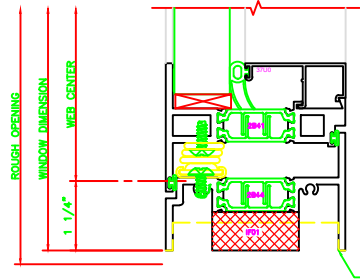


13 - **ERECTOR NOTE:**  
 THE HINGED JAMB FRAME SHALL BE INSTALLED PLUMB. ALL HINGES SHALL BE SECURELY BLOCKED AND ANCHORED TO THE CONDITION THROUGH THE HINGES OR AS CLOSE AS POSSIBLE TO THE HINGES.



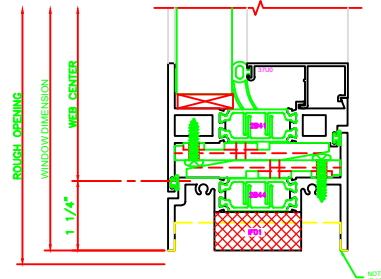
442	JAMB
	325 CASEMENT OUT
	BUTT HINGES

240	SILL
	325 CASEMENT OUT
	4-BAR ARMS



241	SILL
	325 CASEMENT OUT
	BUTT HINGES

NOTE: JAMB TOOLING IF APPLICABLE



NOTE: JAMB TOOLING IF APPLICABLE